



*D*esignové
teplákoviny

PM
design

Designové teplákoviny

Tento materiál je vhodný na:

- Mikiny
- Tepláky
- Čepice
- Nákrčníky
- Kalhoty
- Kraťasy
- Mikinošaty

Složení všech jednobarevných teplákovin je

92% bavlna, 8% elastan

Všechny teplákoviny mají certifikát

OEKO-TEX®
CONFIDENCE IN TEXTILES
STANDARD 100



Informace o materiálu

Teplákovina má pružnou a hebkou strukturu a je velmi pohodlná na nošení.

Údržba materiálu

Prát na 30°C, nedoporučuji sušit v sušičce prádla, žehlit na II. stupeň, nebělit, chemicky neošetřovat.

Ceník designových teplákovin

DJ... - 369,-/m

MJ... - 249 - 339,-/m

TKY... - 340 - 377,-/m

LB... - 249 - 390,-/m

VL... - 369,-/m

LT... - 344,-/m

!!!Pozor!!!

Protože se jedná o několik cenových relací, bude výsledná cena hotového oděvu přepočítaná.

Za práci s kostkou, proužkem nebo geometrickým vzorem je příplatek

→ 13

→ 13 A



FILM NEGATIVE

FILM NEGATIVE

DJ1

→ 14

→ 14 A



FILM NEGATIVE

DJ2

→ 13



FILM NEGATIVE

→ 13 A

DJ3

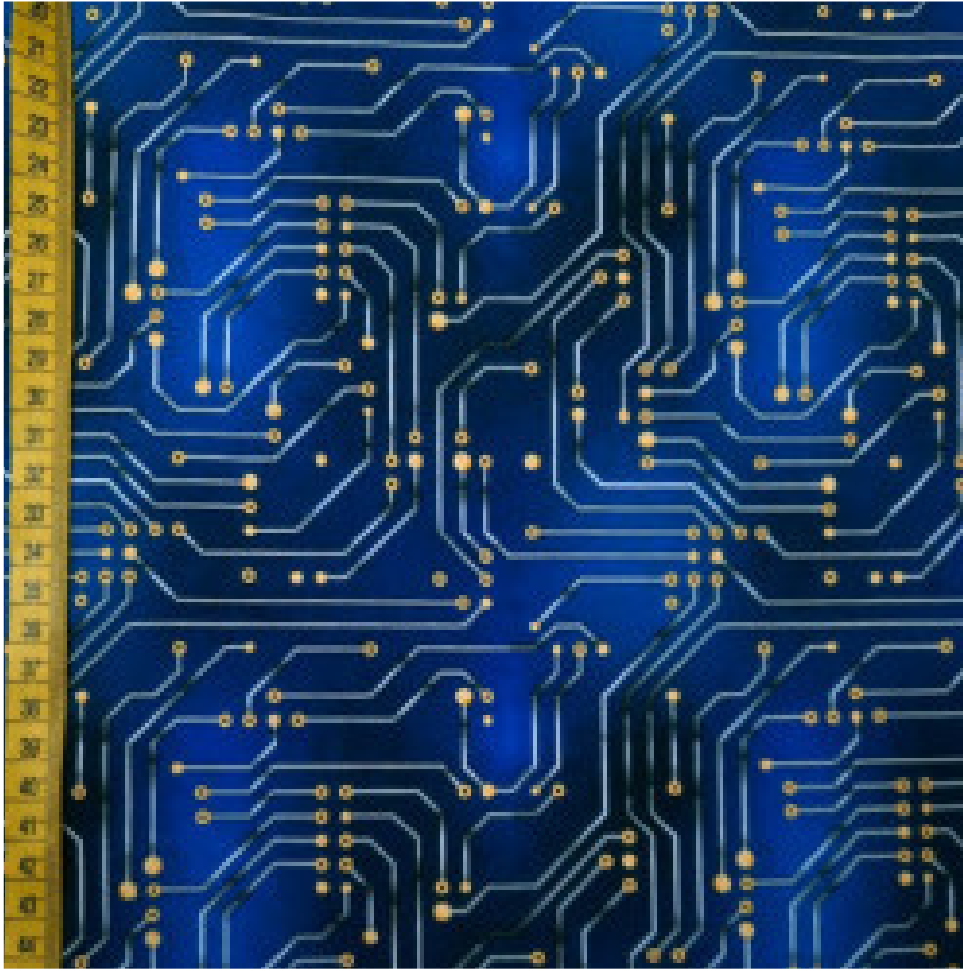
→ 14



FILM NEGATIVE

→ 14 A

DJ4



FILM NEGATIVE

DJ5



FILM NEGATIVE

DJ6



FILM NEGATIVE

MS1



FILM NEGATIVE

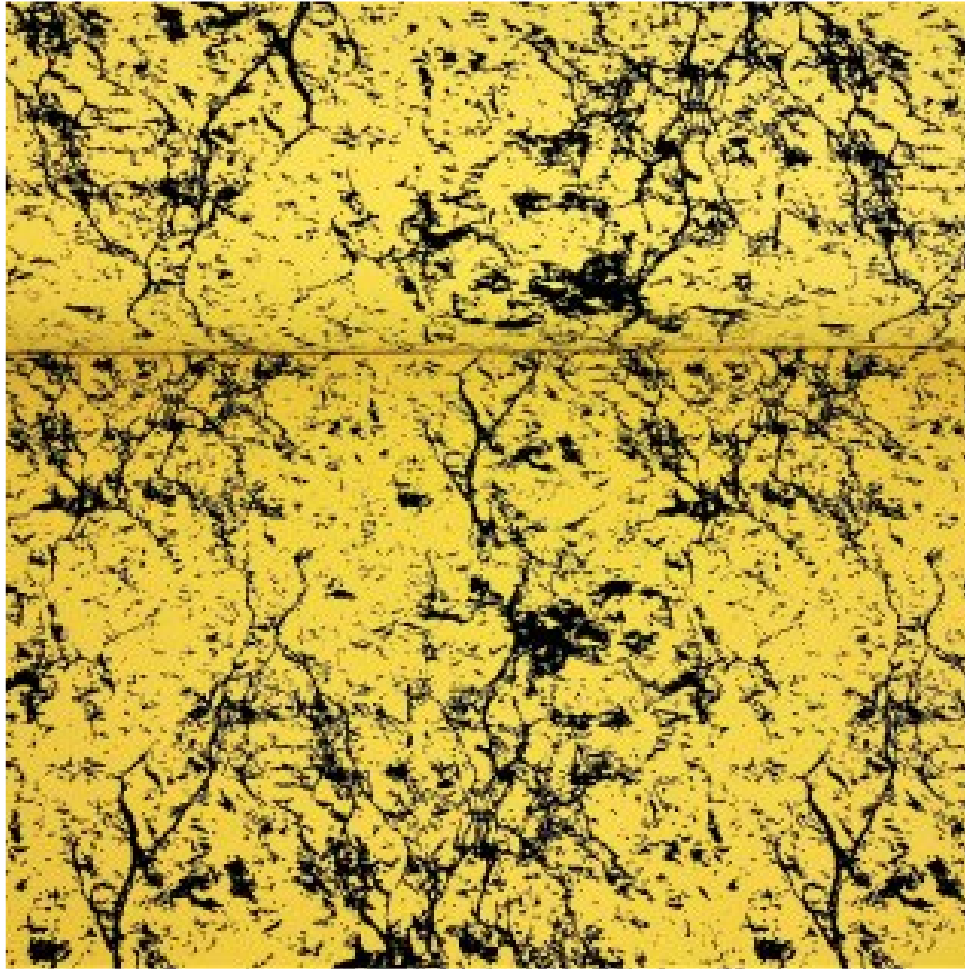
MS2

→ 13

→ 13 A

→ 14

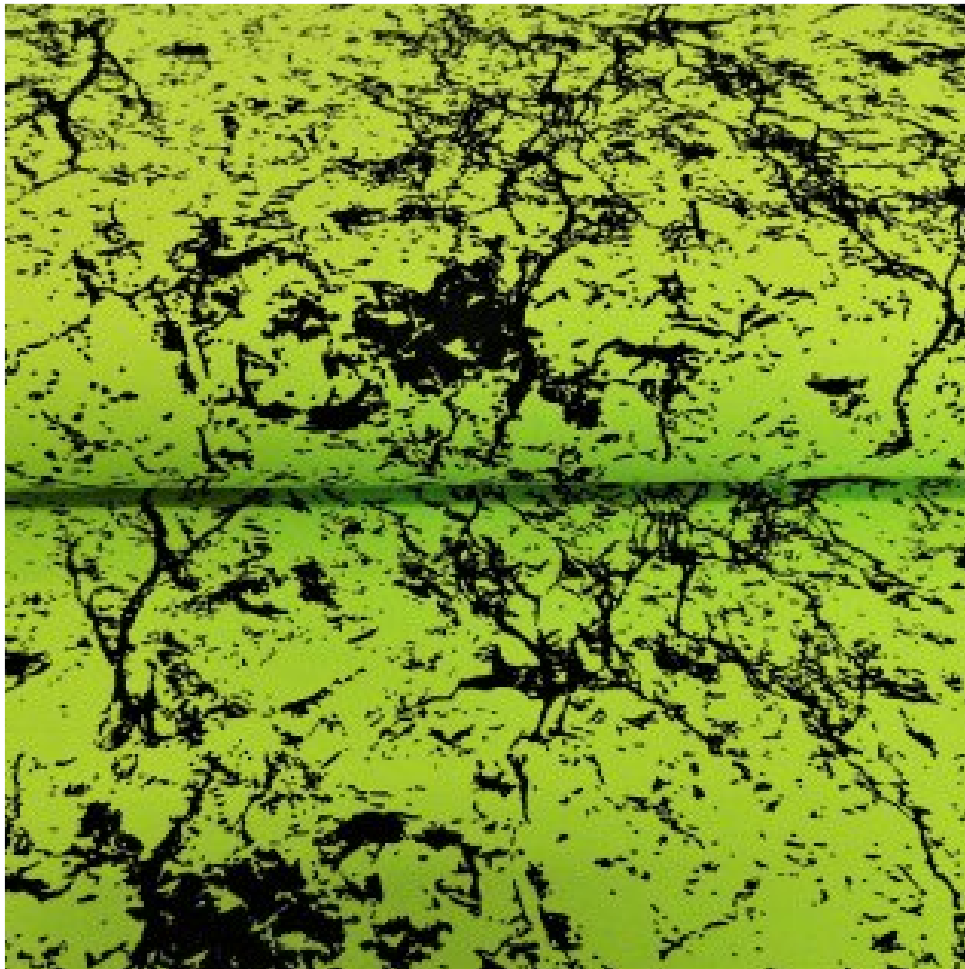
→ 14 A



FILM NEGATIVE

FILM NEGATIVE

MS3



FILM NEGATIVE

MS4

**Momentálně
nedostupné**



FILM NEGATIVE

TKY1



FILM NEGATIVE

TKY2

→ 13

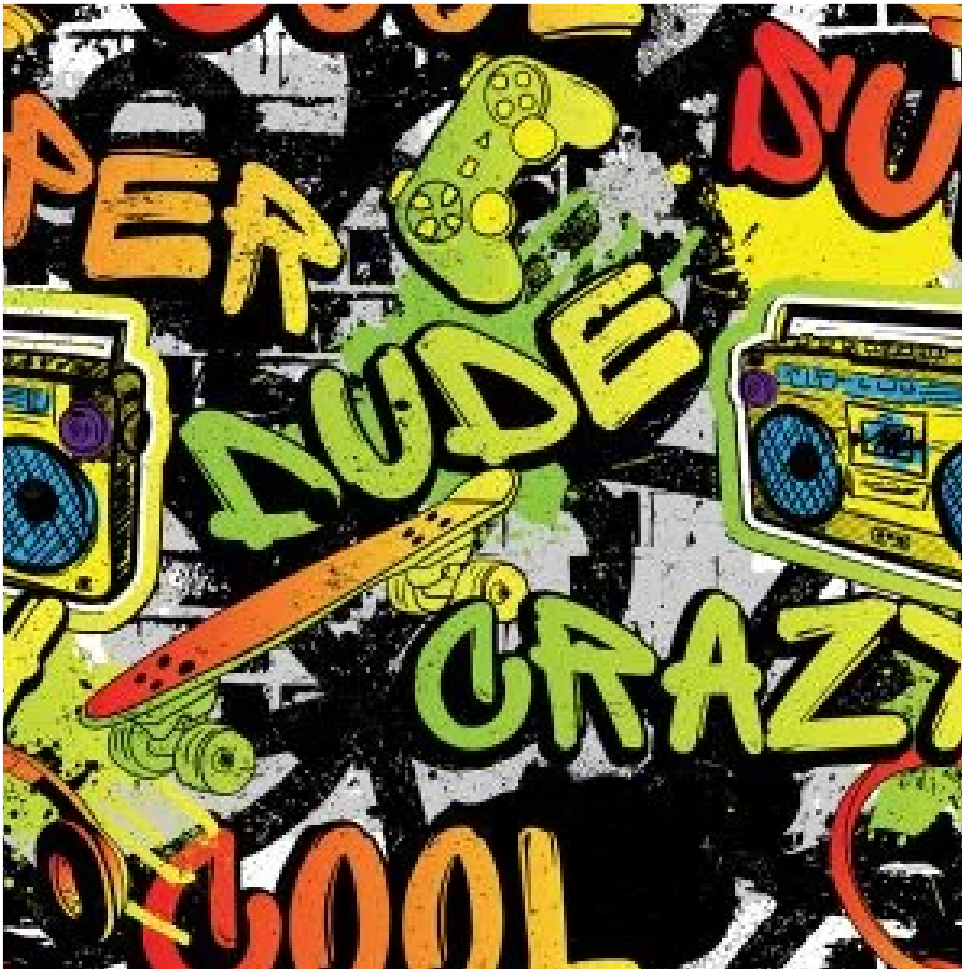


FILM NEGATIVE

TKY3

→ 13 A

→ 14



FILM NEGATIVE

TKY4

→ 14 A

→ 13



FILM NEGATIVE

TKY5

→ 13 A



FILM NEGATIVE

TKY6

→ 14

→ 14 A

FILM NEGATIVE



FILM NEGATIVE

LB1



FILM NEGATIVE

LB2

→ 13

→ 13 A

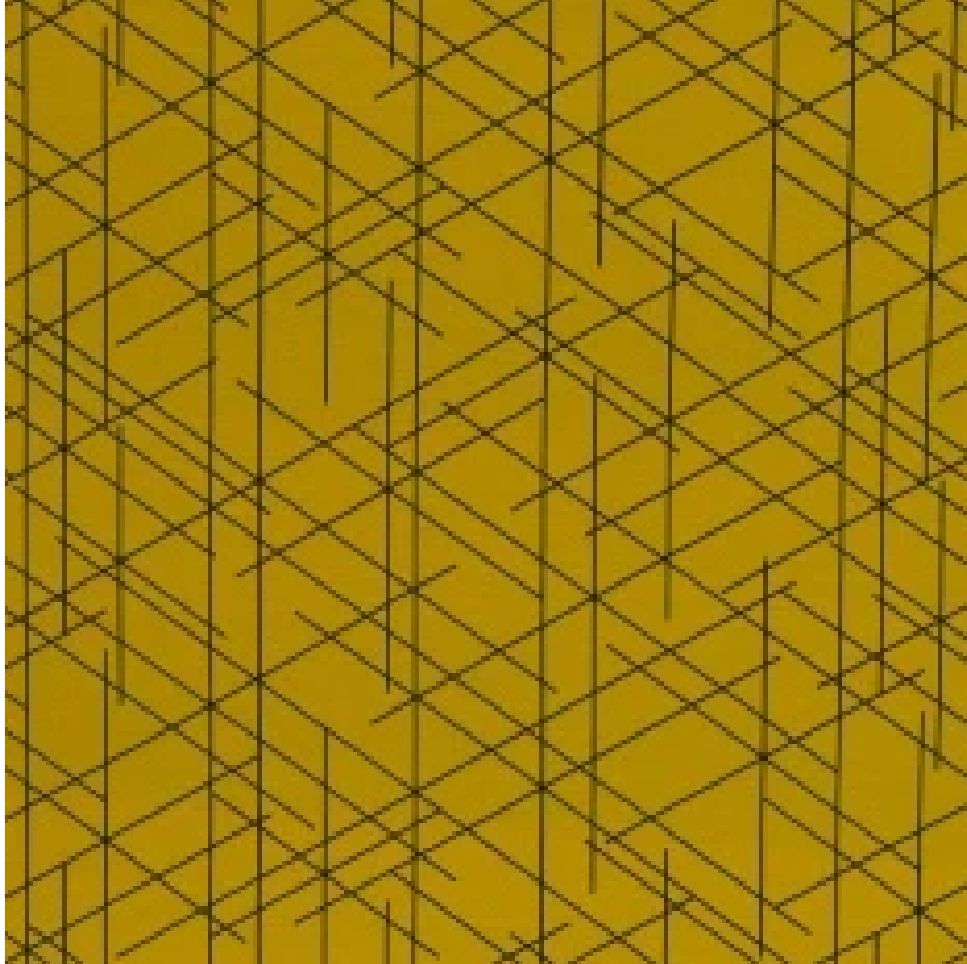
→ 14

→ 14 A



FILM NEGATIVE

LB3



FILM NEGATIVE

LB4

→ 13

→ 13 A

→ 14

→ 14 A

→ 13



FILM NEGATIVE

→ 13 A



FILM NEGATIVE

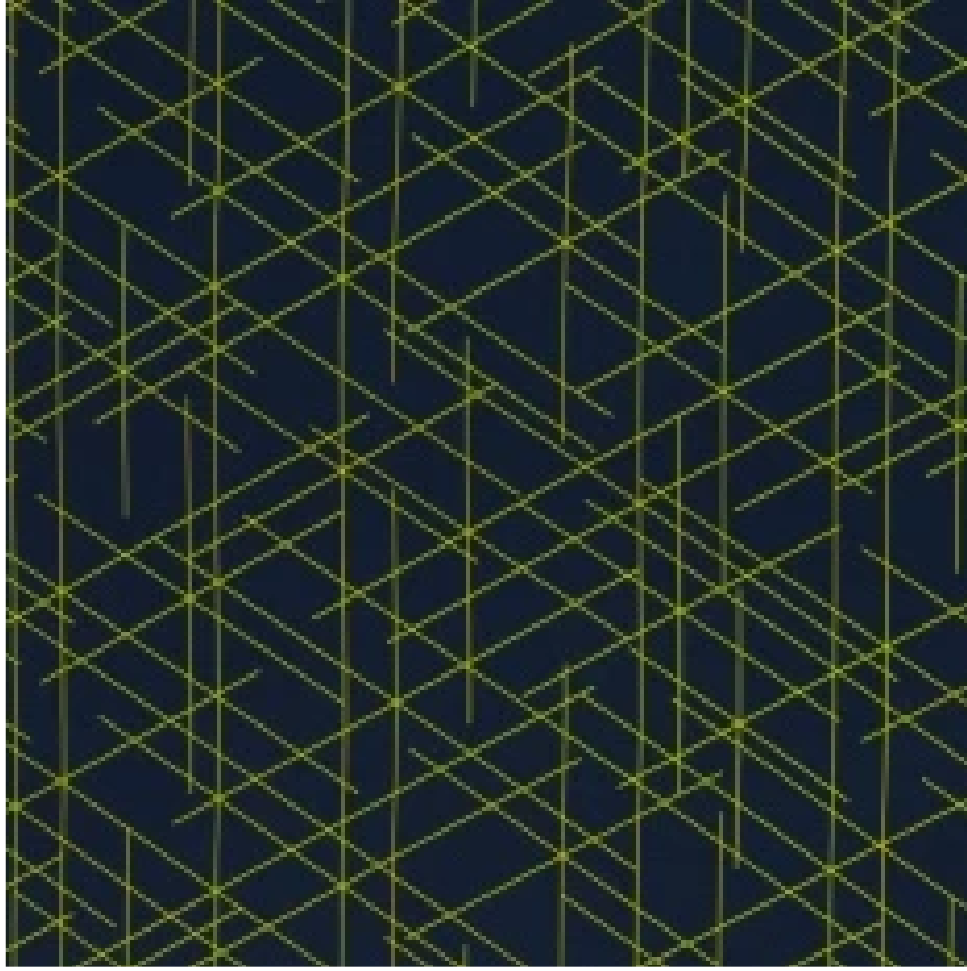
→ 14

→ 14 A

FILM NEGATIVE

LB5

LB6



FILM NEGATIVE

LB7



FILM NEGATIVE

LB8



FILM NEGATIVE

FILM NEGATIVE

LB9



FILM NEGATIVE

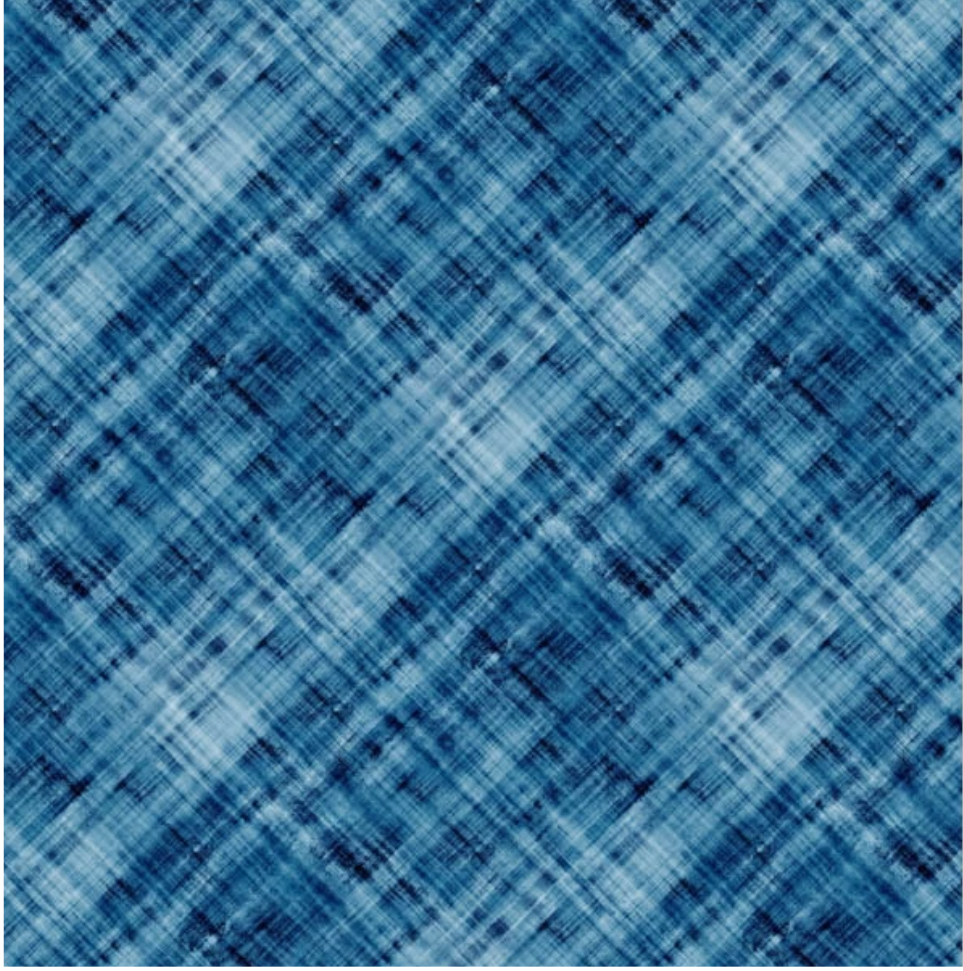
LB10

→ 13

→ 13 A

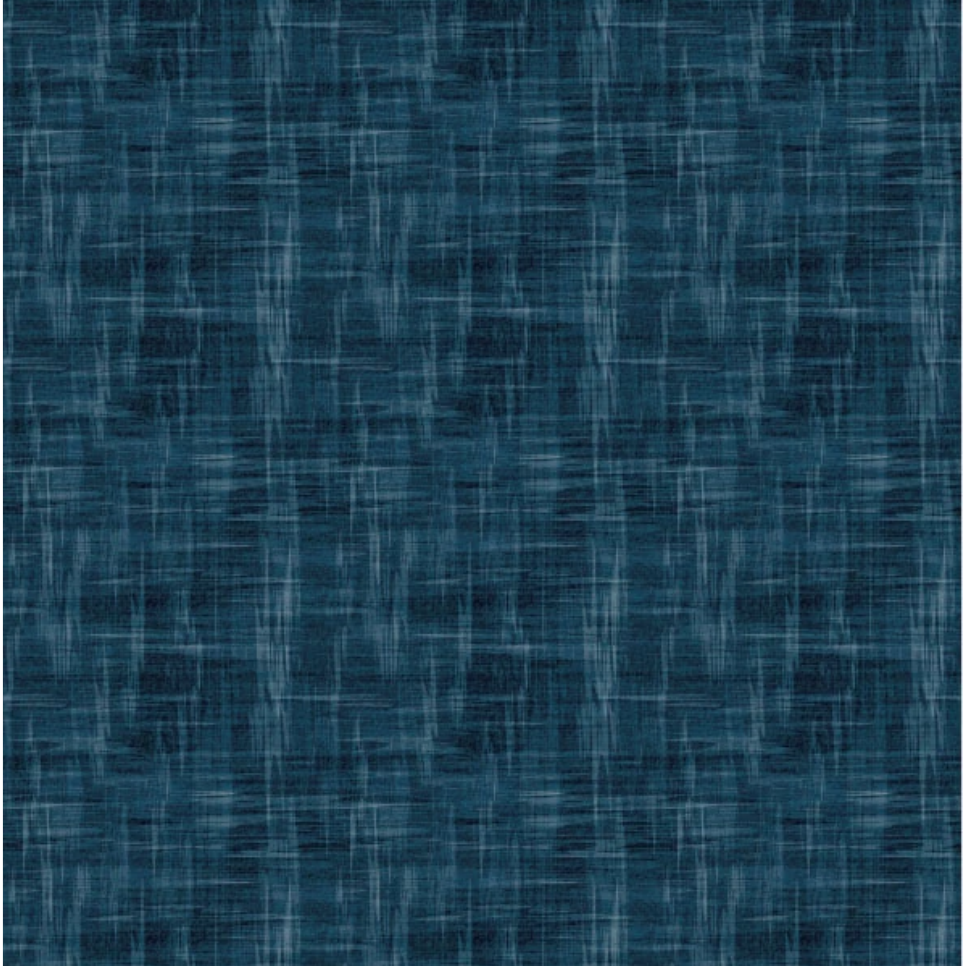
→ 14

→ 14 A



FILM NEGATIVE

VL1



FILM NEGATIVE

VL2

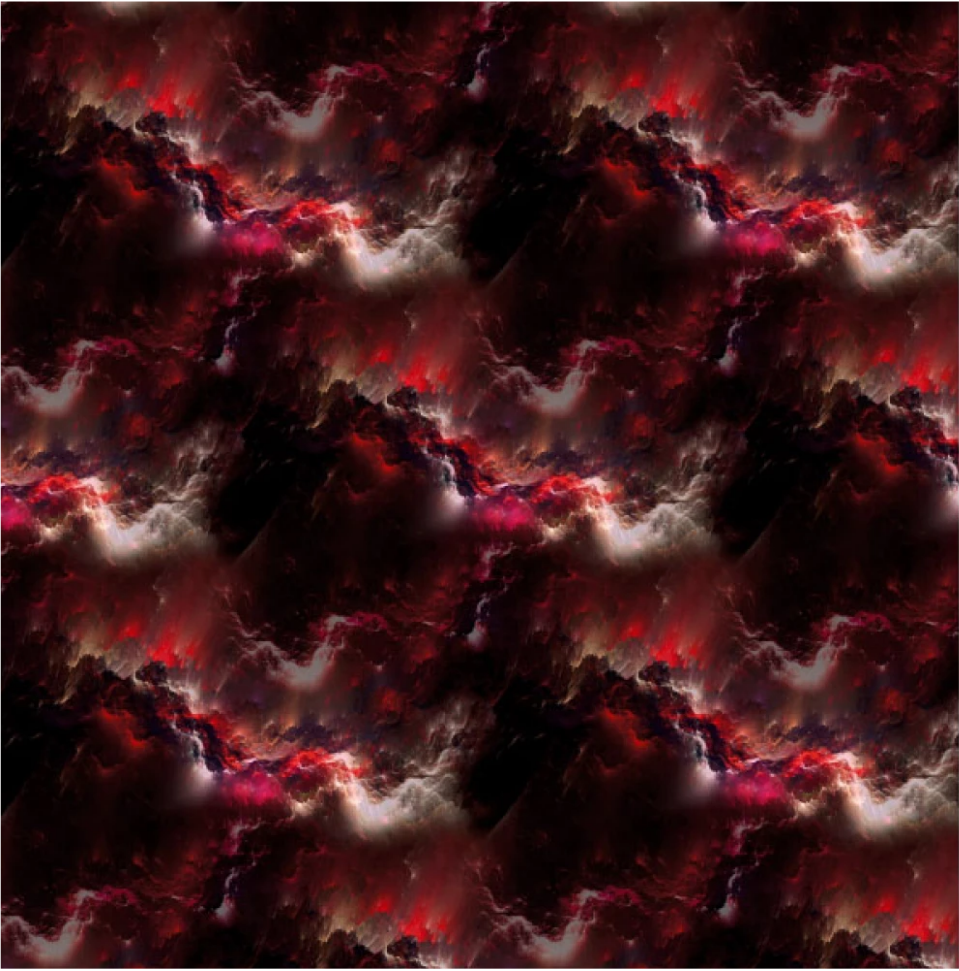
→ 13

→ 13 A

→ 14

→ 14 A

→ 13



FILM NEGATIVE

VL3

→ 13 A

→ 14



FILM NEGATIVE

VL4

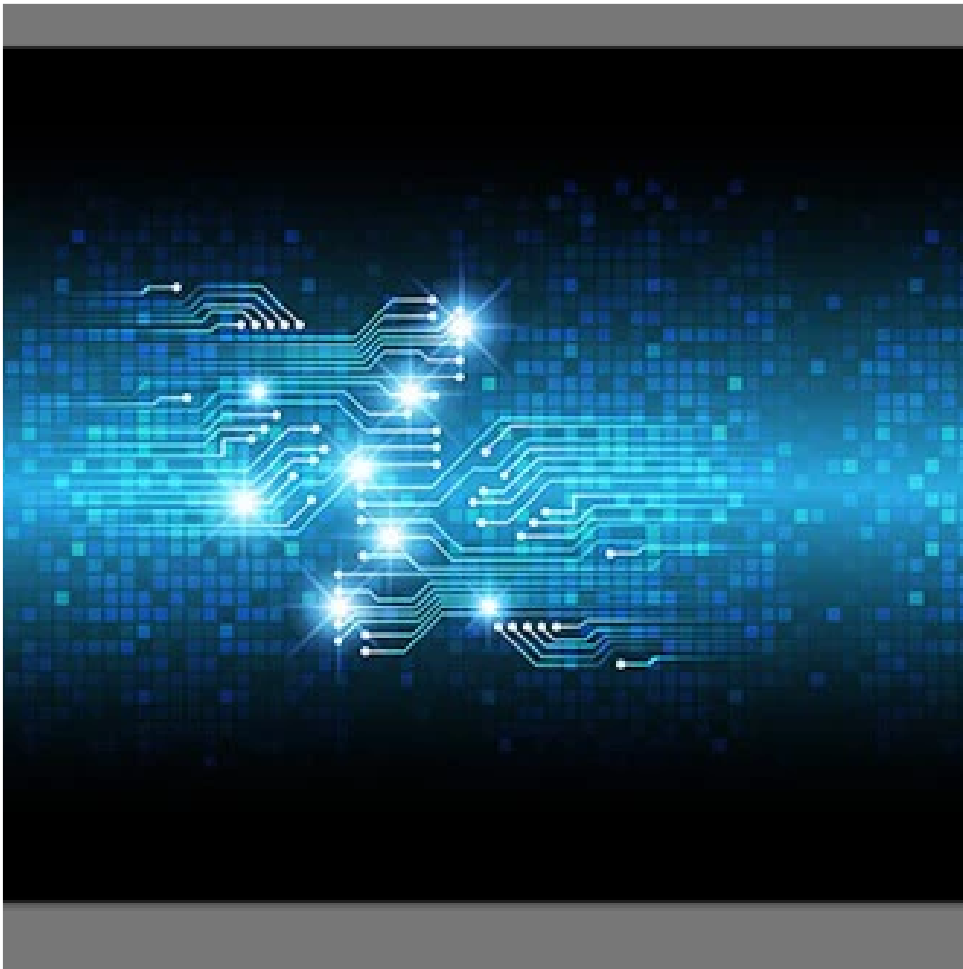
→ 14 A

FILM NEGATIVE



FILM NEGATIVE

VL5



FILM NEGATIVE

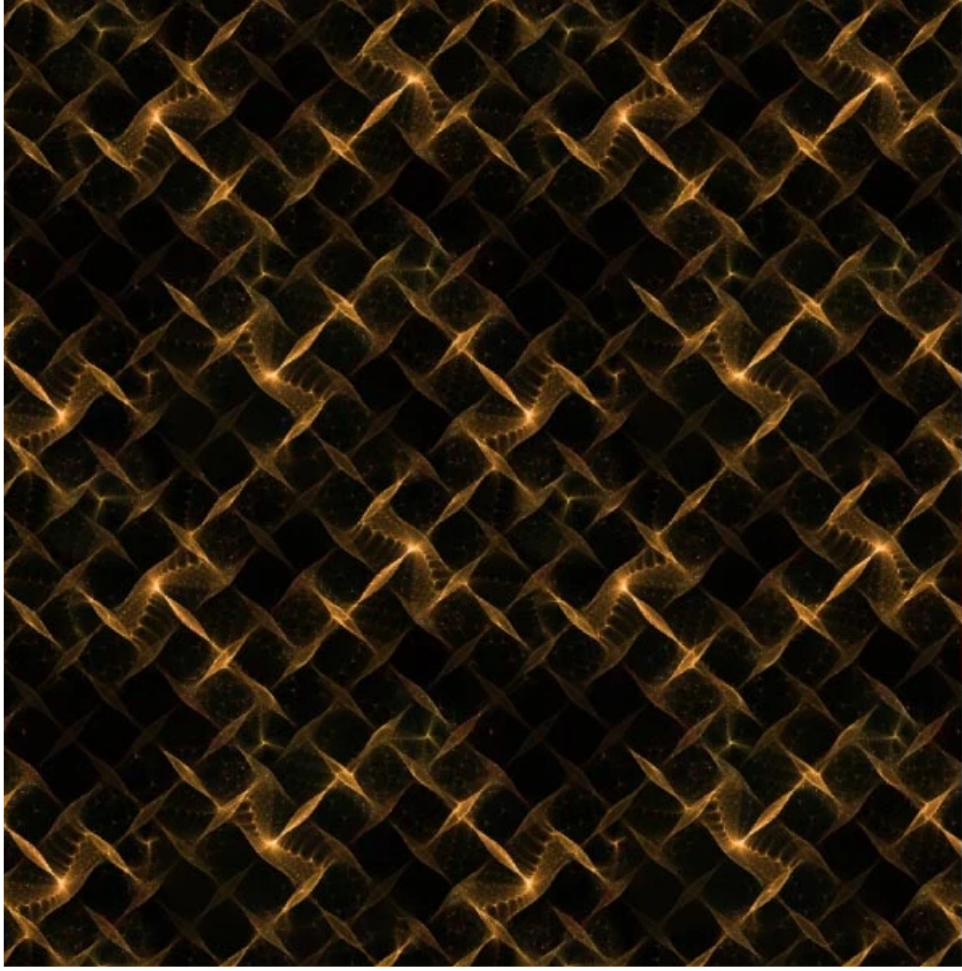
VL6

→ 13

→ 13 A

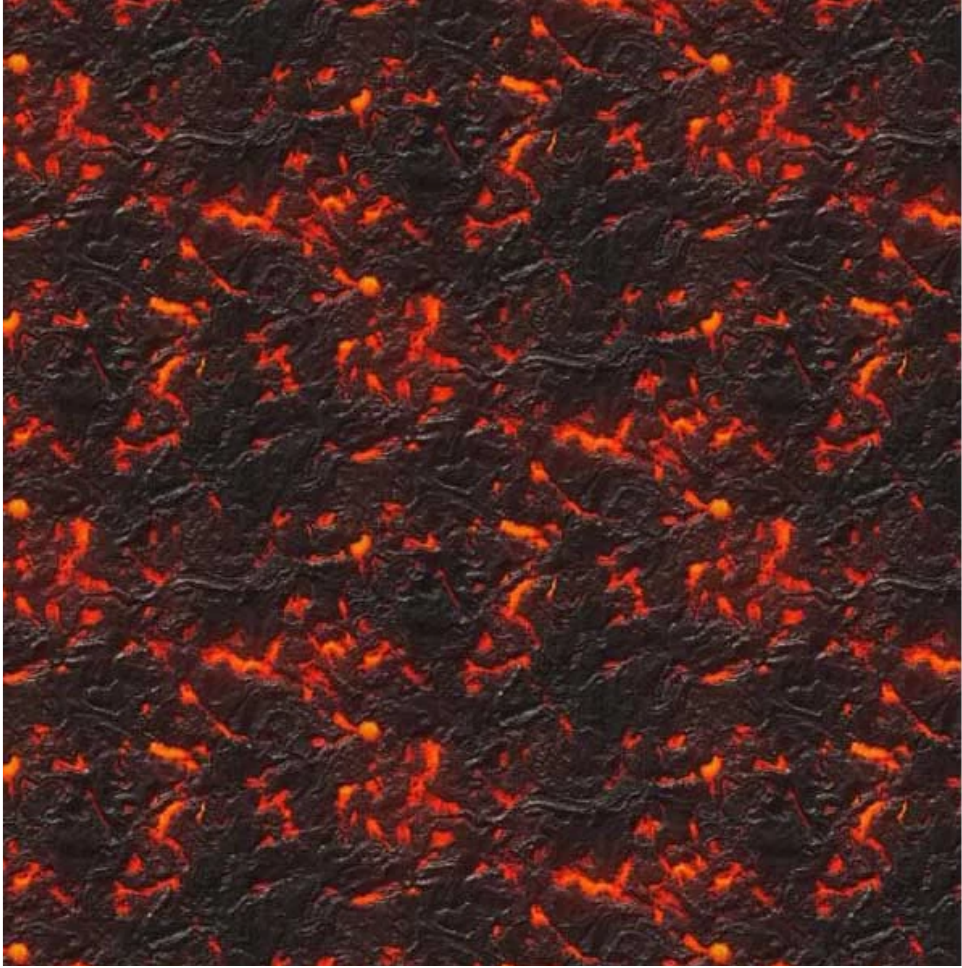
→ 14

→ 14 A



FILM NEGATIVE

VL7



FILM NEGATIVE

VL8

→ 13

→ 13 A

→ 14

→ 14 A

→ 13



FILM NEGATIVE

→ 13 A



FILM NEGATIVE

→ 14

→ 14 A

FILM NEGATIVE

LT1

LT2